

An aerial satellite view of a city, likely London, with a river (the River Thames) winding through it. The image is overlaid with a blue tint. A specific location is highlighted with a glowing blue circle and a white 'X' marker. Text next to the marker indicates the distance to the nearest petrol station.

# A simple guide to your GPS Navigation Software



Nearest petrol station  
0.8 Miles NW

O<sub>2</sub>



# Contents

1. Check the package contents	2	6. Getting started	11
2. Preparing your Xda	4	7. Tips and tricks	14
3. Installing CoPilot Live 7	5	8. First journey	15
4. Starting up	7	9. On the move	20
5. Activating CoPilot Live 7	8	10. CoPilot Central	25
		11. Help and support	28

# 1. Check the package contents

## Welcome to CoPilot Live 7 for your Xda

Thank you for choosing the CoPilot Live 7 for your Xda. This Quick Start Guide will help get your GPS car navigation system up and running on your Xda.

It explains all the basics, with easy page shortcuts to your full user guide. You can find this guide on the CoPilot Central desktop companion DVD in your CoPilot Live 7 box.

**Note:** For easy access to your shortcuts, please install the software onto your desktop.

Please make sure you've received all the correct contents in the package. You should find a:

1. CoPilot Live 7 memory card
2. CoPilot Live 7 product key card
3. CoPilot Central desktop companion software DVD
4. Car mount\*+
5. Car charger\*

\* This is an optional accessory and is only included in certain CoPilot Live 7 navigation kits.

\* + The car mount may vary.

### 1. CoPilot Live 7 memory card



### 2. CoPilot Live 7 product key card



### 3. CoPilot Central desktop companion software DVD



### 4. Car mount



### 5. Car charger



Note: These products are for illustration only. The actual products may look slightly different.

## 2. Preparing your Xda

First, insert the supplied CoPilot Live 7 (see fig 1) memory card into the card slot of your Xda.

**Note:** Your CoPilot Live 7 card includes adaptors that will fit MicroSD, MiniSD and standard SD slots. If you're unsure about how to insert a Memory Card, please refer to your Xda instructions.

**Important:** Make sure you set the correct date and time on your Xda. This is essential to receiving the best GPS functionality.



1

## 3. Installing CoPilot Live 7

To get you up and running quickly with Sat Nav, we have pre-installed CoPilot Live 7 Sat Nav software on your Xda.

If for some reason you do need to re-install CoPilot Live 7 please follow these instructions.

When you turn on your Xda, the CoPilot Live 7 installer should automatically start.

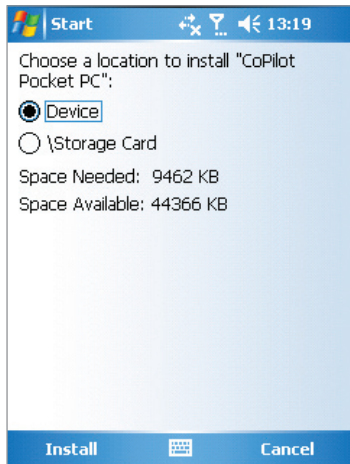
If it doesn't automatically start, just open [File Explorer](#) and go to [Storage Card > 2577](#) and tap [AUTORUN](#).

You'll be taken through the following steps:

- You will be asked to accept the Licence agreement for CoPilot Live 7. Click [I Accept](#) to continue.

- Please review the GPS information on the next screen and then tap [OK](#).
- Select a location for your installation. We recommend that you install it on your Xda ([see fig 2 on the next page](#)).
- Tap [Install](#) to continue.
- CoPilot Live 7 will now install. This takes a few minutes, so please be patient.
- A message will advise you of successful installation. All you need to do is select [OK](#).

Now restart your Xda.



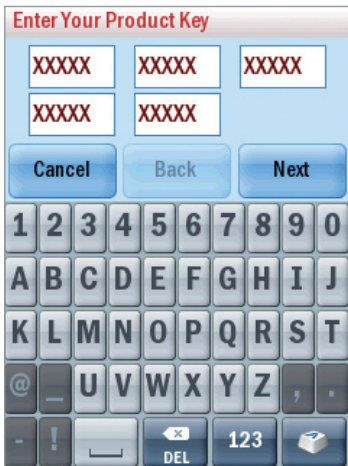
2

## 4. Starting up

When your Xda has restarted, tap the CoPilot icon  on the Today screen. This will launch CoPilot Live 7.

**Note:** Alternatively, you can select **Start > CoPilot**, or **Start > Programs > CoPilot** to launch the application.

You will now be asked to enter a product key (see fig 3). This is found on the product key card that comes with your CoPilot Live 7 software. You'll need to enter your product key numbers in the boxes provided and then click [Next](#).



3

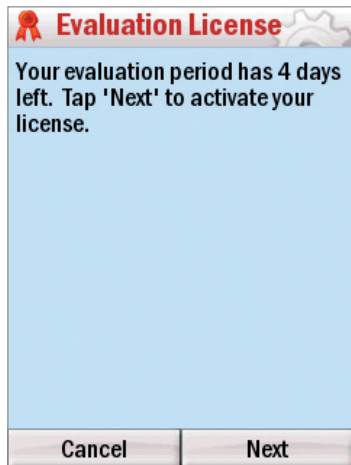
## 5. Activating CoPilot Live 7

You'll now be asked to activate your software.

Press **Next** to activate the licence now or **Cancel** if you prefer to activate it later (see fig 4). If you cancel the activation, you can still use your CoPilot Live 7 software for four days under an evaluation licence.

The CoPilot Live 7 licence can also be activated automatically using the Internet connection from your Xda or computer. To do this, visit the activation website at <http://activate.alk.com>

**Note:** If you want to use automatic activation without a computer connection, you must have an Internet connection set up on your Xda.



4

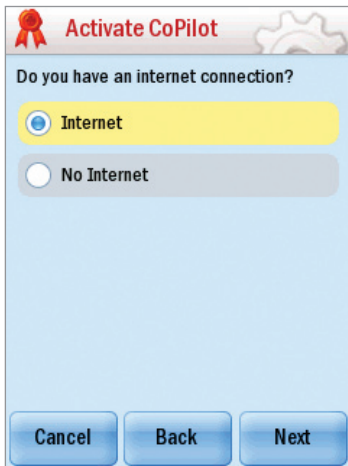
## Activation using the Internet connection of your Xda (see fig 5)

- Tap on Internet to select it and then tap [Next](#).
- Enter your email address when requested and tap [Next](#).

CoPilot Live 7 will try to connect to the Internet using your mobile's Internet connection.

If you cannot connect an error screen will appear. You will need to return to the previous screen to re-try or you can select 'No Internet'. Tap [Back](#) to do this.

**Note:** Please contact O<sub>2</sub> to find out if your mobile has wireless Internet or if your SIM is data enabled.



5

## Activation with your computer's Internet connection

You should have synchronisation software and a cable supplied with your Xda. This enables you to connect your mobile to a computer with an Internet connection.

- Tap on [Internet](#) to select it and then tap [Next](#).
- Enter your email address when asked and tap [Next](#).

CoPilot Live 7 will automatically activate through your computer's Internet connection to the activation server.

**Note:** To activate your licence manually please see page 9 of your full user guide.

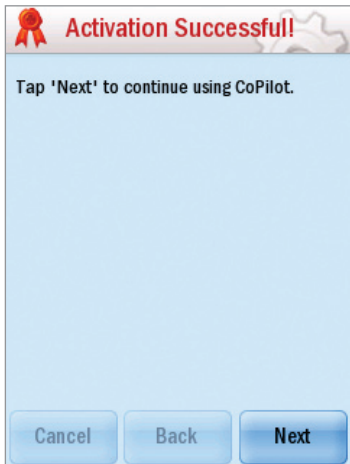
## 6. Getting started

You'll see the Activation Successful screen when your software has been activated.

Tap [Next](#) to continue using CoPilot Live 7 (see fig 6).

You may need to select and confirm a data region depending on your licence.

Tap [Finish](#) to continue using CoPilot Live 7.



6

## Select language and voice

You will need to set the language you want for on-screen text and voice guidance. Then press [Next](#) (see fig 7).

**Set Language**

**Choose a Language:**

UK English

**Choose A Voice:**

Jane

1 Test

Next

7

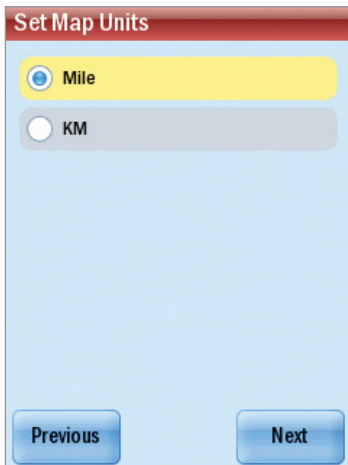
## Select a distance measurement

Select either [Miles](#) or [Kilometres](#) as distance units for maps and instructions. Press [Next](#) (see fig 8).

### Safety Warning

You will be asked to accept the Safety Warning for CoPilot Live 7.

Click [Accept](#) to continue.



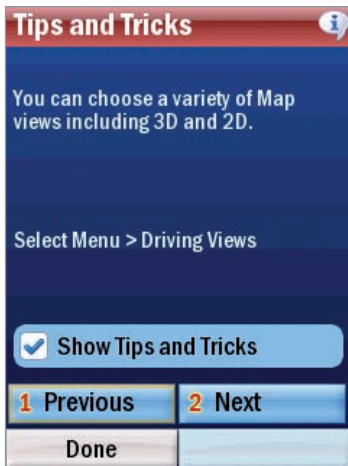
8

## 7. Tips and tricks

CoPilot Live 7 has a lot of great features. You can find out about them through the Tips and Tricks that appears at start up.

If you want to turn off Tips and Tricks, just uncheck the 'Show Tips and Tricks' box (see fig 9).

To read on, simply use the arrows, < and >. To close the window, just click on the cross.



9

## 8. First journey

### Setting a destination

There's no need to enter your starting point as CoPilot Live 7 uses GPS satellites to calculate your exact position. Simply enter your destination and CoPilot Live 7 will take you there, with detailed instructions all the way.

1. Tap [Menu > Destination > Address](#).
2. Enter the destination city or town name (**see fig 10 on the next page**).
3. Select the correct city or area when it appears in the list below. Scroll down to see more options that match what you have typed.
4. Enter the first three or four letters of the street name. Select the correct one when it appears in the list below the street name field.

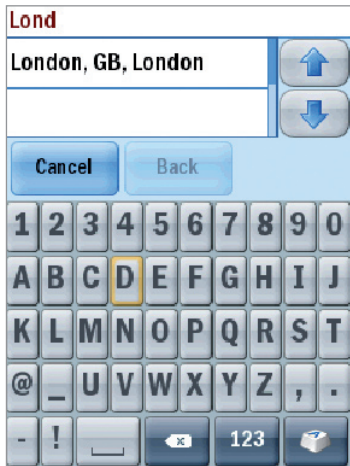
5. Enter the house number and select [Finish](#). You can skip this step by selecting [Finish](#).
6. A screen will appear to show you a map of the route (**see fig 11 on the next page**). Tap [Drive](#) to begin navigating your route.

### Tip: Quick address entry

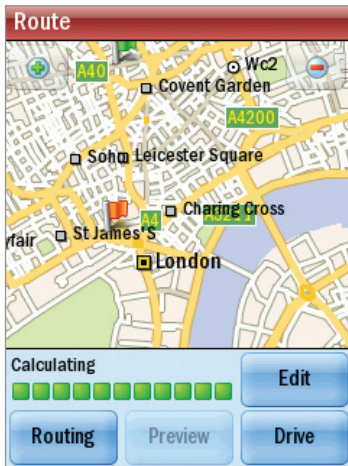
You can quickly enter an address in CoPilot Live 7 by using postcodes.

Tap [Menu > Destination > Address](#).

Enter in the postcode and key in a house number then press [Finish](#).



10



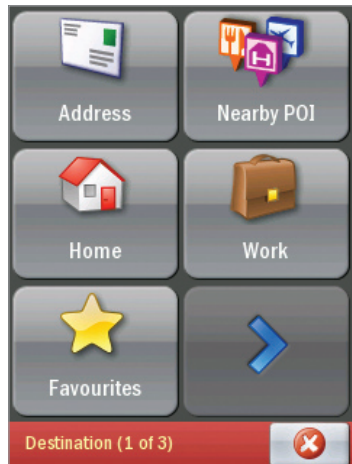
11

There's a lot more you can do with your CoPilot Live 7. In this section, you'll find some helpful page references from your full user guide which gives you more detailed information:

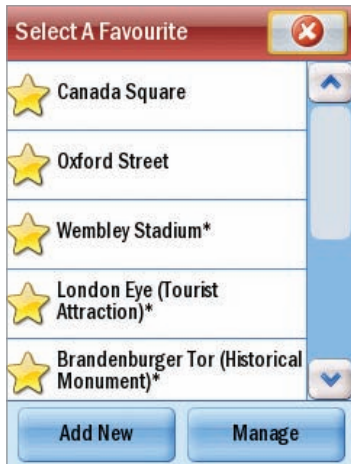
- To plan a trip with multiple destinations, waypoints or to optimise your journey go to [pages 19, 20 and 32](#) in your full user guide (see [fig 12 on the next page](#)).
- You can set and save your home and work addresses to make route planning quick and easy route. Select [Menu > Destination](#). See [page 27](#) in your full user guide for more information (see [fig 13 on the next page](#)).
- To create and manage your favourite destinations refer to [page 28](#) in your full user guide (see [fig 14 on the next page](#)).
- To choose to see an itinerary list of your route, a map of each turn or a demonstration of the whole route go to [page 22](#) in your full user guide (see [fig 15 on the next page](#)).



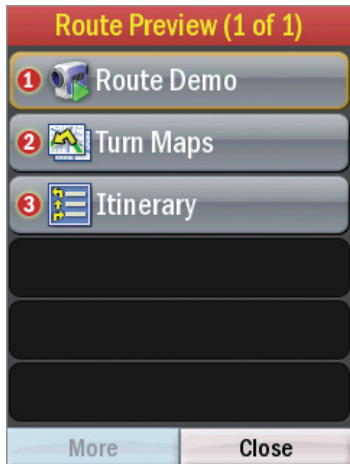
12



13



14



15

## 9. On the move

**Your safety:** Never attempt to change the settings or set a destination with CoPilot Live 7 while you are driving. Instead, ask a passenger to make changes or pull over safely.

Make sure that your Xda is not left loose in the car while driving. It should be correctly seated in a car mount.

### Change the driving view

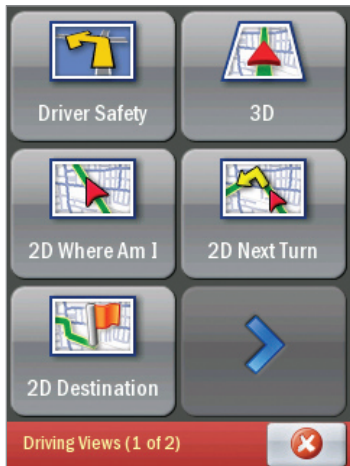
There are a number of different driving views you can choose. Simply select [Menu > Driving Views](#) (see fig 16).

To learn more about the different driving views, go to [pages 24-26](#) in your full user guide.

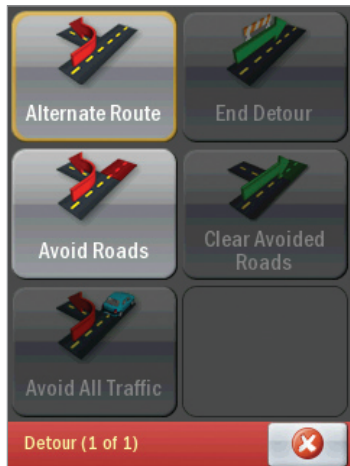
### Take a detour

You can programme CoPilot Live 7 to make a detour from your current route. You can choose an alternative route, or simply detour around a section of the route. [Select Menu > Detour](#) (see fig 17).

To learn about the different detour options, see [page 32](#) in your full user guide.



16



17

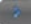

## Avoid traffic\*

CoPilot Live 7 can receive traffic information via mobile Internet or through the TMC traffic service. So, CoPilot Live 7 will automatically display any traffic incidents that affect your route. It will also recommend an alternative route if you need it.

For more information about avoiding traffic, see [page 34](#) in your full user guide.

\* CoPilot Live Traffic may require an additional subscription. This service is not available in certain regions.

## Safety camera alerts\*\*

Safety alerts let you know where safety cameras are located. You can set the distance at which you want to be alerted by choosing [Menu >](#)  [Settings >](#)  [Safety Alerts](#)

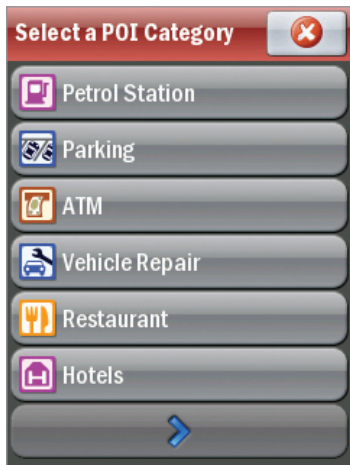
More information on safety camera alerts can be found at [page 44](#) in your full user guide.

\*\*This service is not available in certain regions

## Search for a Point of Interest

Running low on fuel? Looking for a place to park? Or wanting to find a nearby restaurant? You can search by tapping [Menu > Nearby POI](#) (see fig 18).

To learn more about searching for points of interest (POI) go to [page 14](#) in your full user guide.



18

## CoPilot Live Tracking

CoPilot Live 7 enables you to share your location with other people in real-time on the Internet. They can see your location live on the map, send you instant messages and even new destinations. See [page 37](#) in your full user guide for more information.

# 10. CoPilot Central

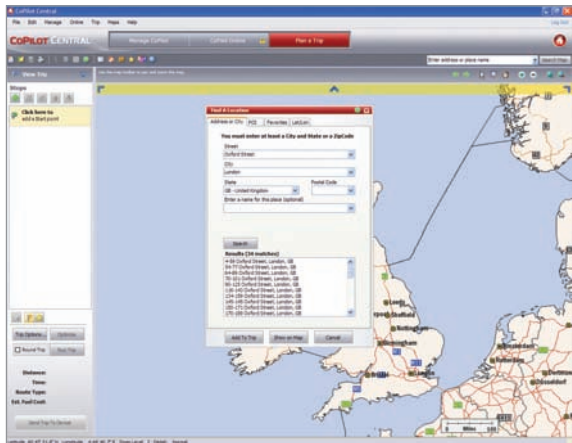
## Installing CoPilot Central

1. Insert the DVD into your computer's DVD drive.
2. An installation wizard will automatically launch.
3. Follow the on screen instructions.

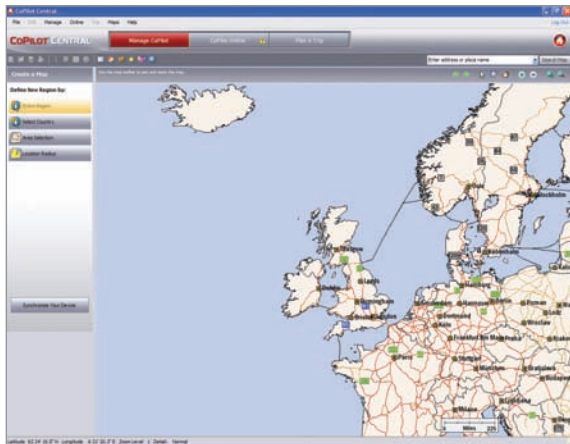
The desktop companion software lets you plan trips, as well as purchase upgrade licences and maps for other regions for your CoPilot Live 7 (see fig 19 & 20 on the next page).

It can also be used to re-load CoPilot Live 7 to your memory card if needed. You'll find a comprehensive CoPilot Live 7 User Manual on the CoPilot Central DVD.

**Note:** If you do not have a DVD reader and prefer the CoPilot Central software to be supplied on CDs, please visit [www.alk.eu.com/buynow](http://www.alk.eu.com/buynow)



19



20

# 11. Help and support

## Help files and user manual

The help function gives you instructions and information about setting up and using the software. Just select [Home > Help](#) (or [Menu > Options > Help](#)).

Additional information to help you make the most out of your CoPilot Live 7 software is available within the CoPilot Live 7 desktop software that is supplied on CD.

In addition, you can view and/or print the full CoPilot Live 7 manual by installing the desktop software onto your desktop/laptop.

## Customer support for your CoPilot Live 7

Please call O<sub>2</sub> Customer Services using the phone number printed on your recent monthly bill or you can email [candsmdata@o2.com](mailto:candsmdata@o2.com)



## PC Requirements

- Windows XP/Vista
- 2GB Storage Space
- DVD Drive
- 1 GHz processor
- 512MB RAM

### **o2.co.uk**

O2 (UK) Limited, 260 Bath Road, Slough, Berks, SL1 4DX.

Registered in England No.1743099. Registered office as above.

### **o2.ie**

O2 Communications (Ireland) Limited, 28/29 Sir John Rogerson's Quay, Dublin 2.

Registered in Ireland: 234895. Registered offices as above.

© O2 plc, © O2 (UK) Limited 2001-2008. Correct at time of going to press (12/07).

O2 is a registered trade mark of the O2 group of companies.

O2CN397N LN 1207. Exp Dec 2008.

